

First Floor

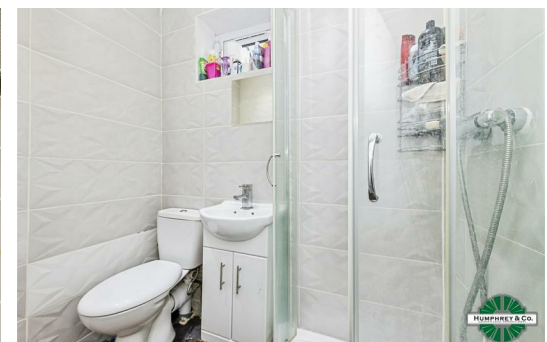
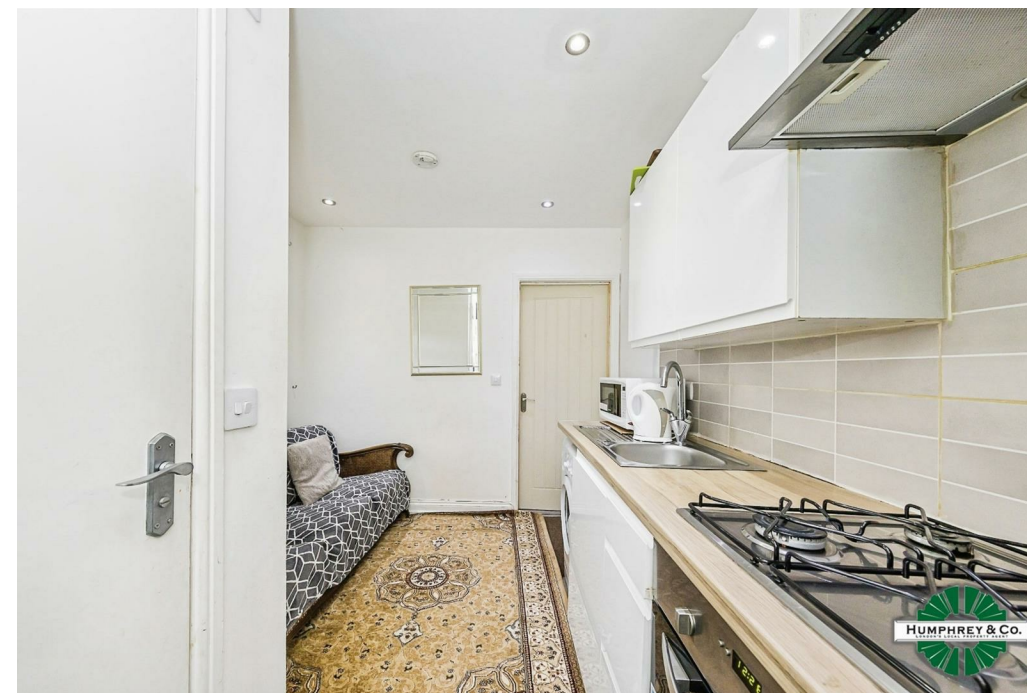


Broad Lane

Approximate Gross Internal Area
First Floor = 17.2 sq m / 186 sq ft

This plan is for layout guidance only. Not drawn to scale unless stated. Windows and door openings are approximate. Whilst every care is taken in the preparation of this plan, please check all dimensions, shapes and compass bearings before making any decisions reliant upon them.

powered by:
THE360IMAGE
www.the360image.co.uk



Directions

Contact

125 Hoe Street
London
E17 4RX

E: lettings@hcolondon.com

T: 02085 210 755

hcolondon.com



1 Bed
Studio
located in



Flat 2 75 Broad Lane

LONDON
N15 4DW

£1,150 PCM



AVAILABLE FROM THE 13TH OF JUNE --- FULLY FITTED KITCHEN --- DOUBLE GLAZED & GAS CENTRAL HEATING --- LAMINATE FLOORING THROUGHOUT --- DOUBLE BEDROOM --- FULLY TILED BATHROOM

Nestled in the heart of London, this charming studio apartment at Broad Lane offers a perfect blend of comfort and convenience. Available from the 13th of June, this property is ideal for individuals seeking a stylish and modern living space in one of the world's most vibrant cities.

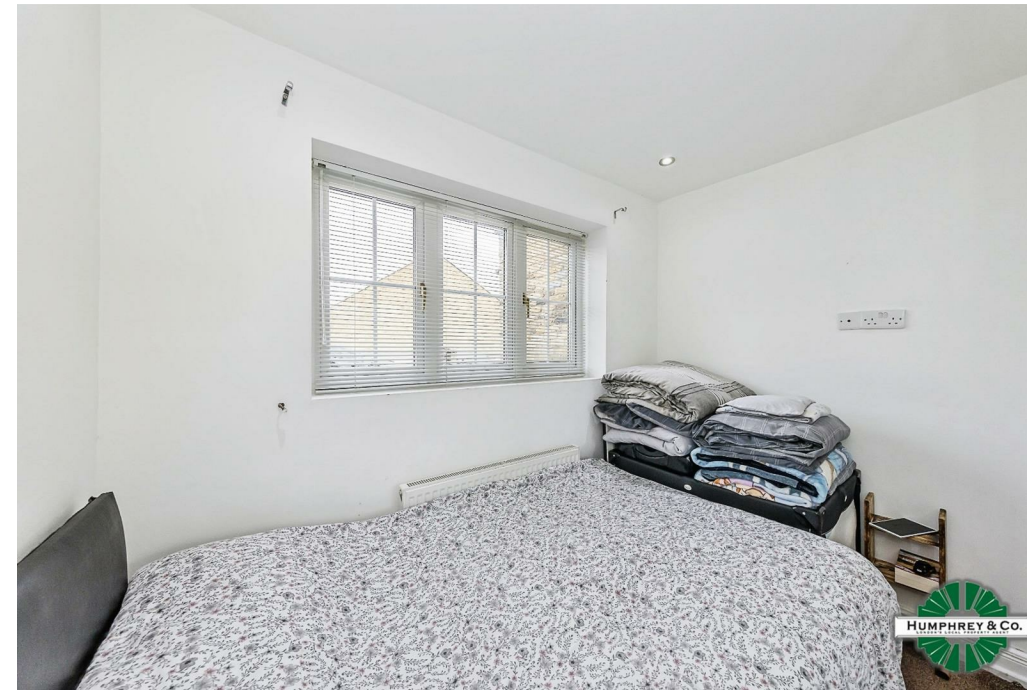
The studio features a fully fitted kitchen, allowing for effortless meal preparation and entertaining. The double-glazed windows not only enhance the aesthetic appeal of the apartment but also provide excellent insulation, ensuring a peaceful and energy-efficient environment.

This property is well-suited for those who appreciate the hustle and bustle of city life while enjoying the tranquility of their own private retreat. With its prime location, residents will have easy access to local amenities, transport links, and a variety of cultural attractions that London has to offer.

Whether you are a young professional or a student, this studio apartment presents a fantastic opportunity to experience urban living at its finest. Do not miss the chance to make this delightful space your new home.

Summary

London's Local Property Agent, Humphrey & Co Estates introduce to the rental market this new build ground floor flat in the heart of Tottenham. The flat comprises of an open plan lounge/kitchen with a newly refurbished breakfast bar, self contained large room, fully fitted kitchen and a fully tiled shower room finished to a high spec. Laminate throughout, gas central heating and double glazed. Furnished or Unfurnished. Ideal for working professionals. Please call our friendly lettings team to secure a viewing.



Energy Efficiency Rating		Current	Potential
Very energy efficient - lower running costs			
(92 plus) A			
(81-91) B			
(69-80) C			
(55-68) D			
(39-54) E			
(21-38) F			
(1-20) G			
Not energy efficient - higher running costs			
England & Wales		EU Directive 2002/91/EC	

